

Content and Process

For FileNet P8

... Push, Pull, Route, Hold, Business Rules and Reporting

KwikWork® Content and Process provides FileNet P8 users with a customizable user interface - one place to perform all of their work tasks. Deploying the solution is expedited and in turn less expensive, while processing the work becomes more efficient and intuitive.

Accessing information is critical to the process. Now it just got easier...

Processing work isn't easy. Juggling multiple demands - documents, emails, letters, work items, writing letters and reviewing client records while meeting challenging deadlines. KwikWork for Content and Process provides users the ability to perform this work from a single interface, making it easier to get the job done. *Today.*

KwikWork Content and Process features include:

- ◆ Security (User, Queue, Role)
- ◆ Document & Work Item Search
- ◆ Push & Pull Processing
- ◆ Route & Hold Processing
- ◆ Business Rules & Route Automation
- ◆ Update of Work Item & Document Properties
- ◆ Universal & Configurable Import Facility
- ◆ Drag & Drop into Content Repository
- ◆ Automated Letter Generation
- ◆ Automation of Turnaround Documents
- ◆ Process Reporting (Inventory, Status, etc.)
- ◆ Logon Access Reporting (e.g. SLU)
- ◆ Configurable User Interface
- ◆ "Helper" Class APIs

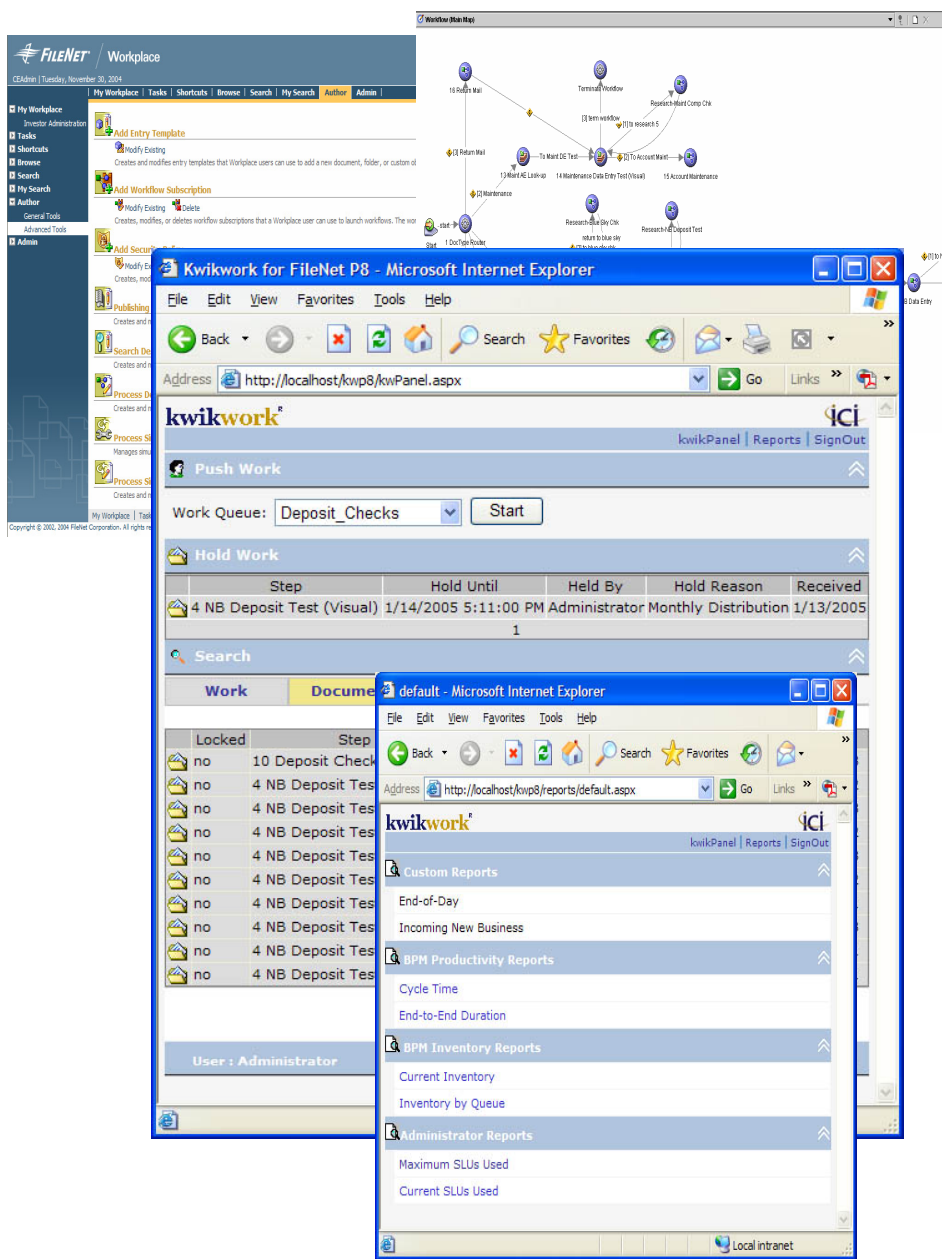


KwikWork Content and Process cost-effectively extends capabilities across the enterprise...

- | | |
|-------------------------|---------------------|
| ◆ Accounts Payable | ◆ Legal Records |
| ◆ Human Resources | ◆ Student Records |
| ◆ Remittance Processing | ◆ Financial Records |
| ◆ Order Processing | ◆ Patient Records |
| ◆ Permit Processing | ◆ Admissions |

Configurable user interface leveraging the hidden power of FileNet's P8 Platform...

contact us today!



Configurable out-of-the-box applications provide for rapid deployment and expedited benefit attainment.

...Automated and fool proof.

Varied System Configurations

- ◆ Supports wide variety of deployments (single, multi-server environments)

Lifecycle Implementation Services

- ◆ Business Case Services
- ◆ Implementation Services
- ◆ IT Support Services
- ◆ Production Support Services

Business Continuity

- ◆ Single Point of Contact (SPOC); includes software, hardware, and application support
- ◆ Optional 24x7 Offering
- ◆ Remote System Administration
- ◆ Application System Monitoring

888.82IMAGE

CORPORATE HEADQUARTERS

ICI SOLUTIONS, INC.

7201 WEST OAKLAND STREET
SUITE 2
CHANDLER · AZ · 85226

REGIONAL OFFICES

SAN DIEGO · LOS ANGELES · ST. LOUIS
MINNEAPOLIS · HARTFORD · CHARLOTTE

www.icisolutions.com • icisales@icisolutions.com